



TS-990S
TS-590SG
TS-590S
TH-D72A/E
KPG-22U
KPG-46U

Virtual COM Port Driver

Last updated : October 31, 2014

● Introduction

- Thank you for choosing the KENWOOD transceivers. You can connect your TS-990S, TS-590SG, TS-590S, or TH-D72A/E to a PC via a USB cable, or you can connect your TH-K20A/E, TH-K40A/E, TM-281A/E, or TM-481A to a PC via the KPG-22U/46U by installing the virtual COM port driver in the PC, and then utilize the Radio Control Program or Memory Control Program we have provided.
- This virtual COM port driver installation program is provided by [Silicon Laboratories Inc.](#)
- After reading through the following explanations, feel free to download and install the software.

● Operating Environment

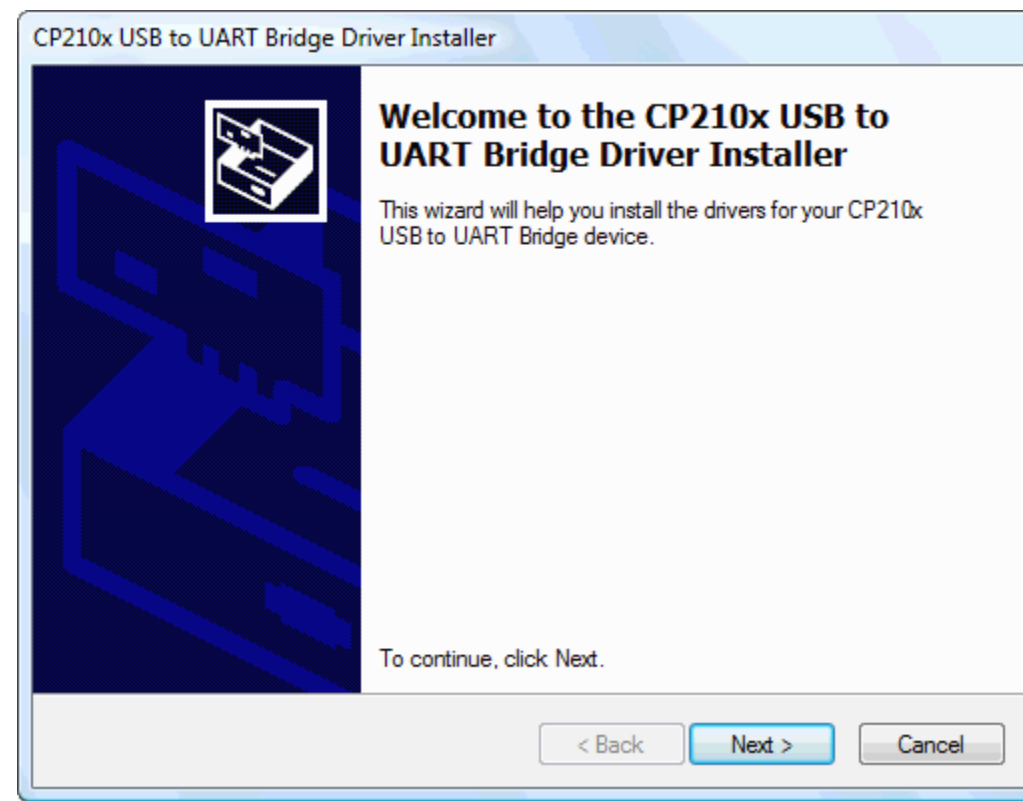
1. Operating System (OS)
 - Windows Vista® (Service Pack 2 or later)(32-bit)
 - Windows® 7 (RTM or later) (32-bit or 64-bit)
 - Windows® 8 (RTM or later) (32-bit or 64-bit)
 - Windows® 8.1 (RTM or later) (32-bit or 64-bit)
2. Peripheral Devices
 - USB 2.0 interface.

● Installing the virtual COM port driver

ATTENTION: Do not connect the device to a PC before installing the virtual COM port driver.

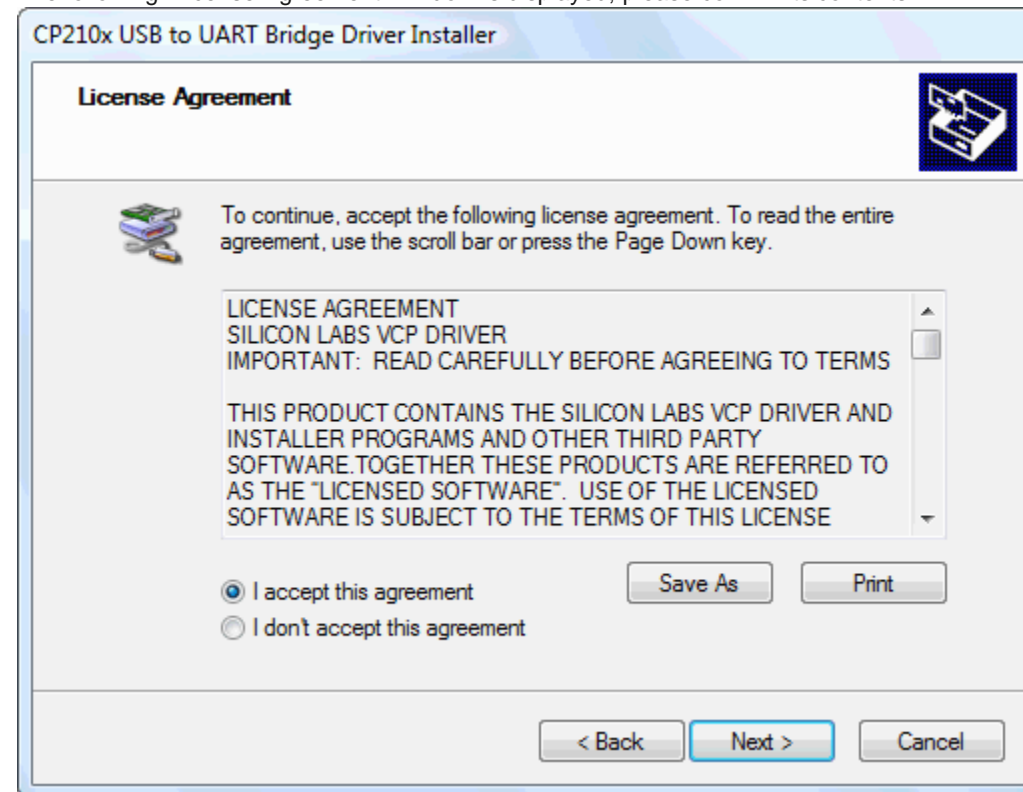
1. Extract the downloaded file "CP210x_VCP_Windows.zip" into a designated folder. In the designated folder, a folder labeled "CP210x_VCP_Windows" will be created.
In the folder labeled "CP210x_VCP_Windows", double click the "Cp210xVCPInstaller_x86.exe" with 32-bit OS, or the "Cp210xVCPInstaller_x64.exe" with 64-bit OS.

After a few moments, the following window is displayed.



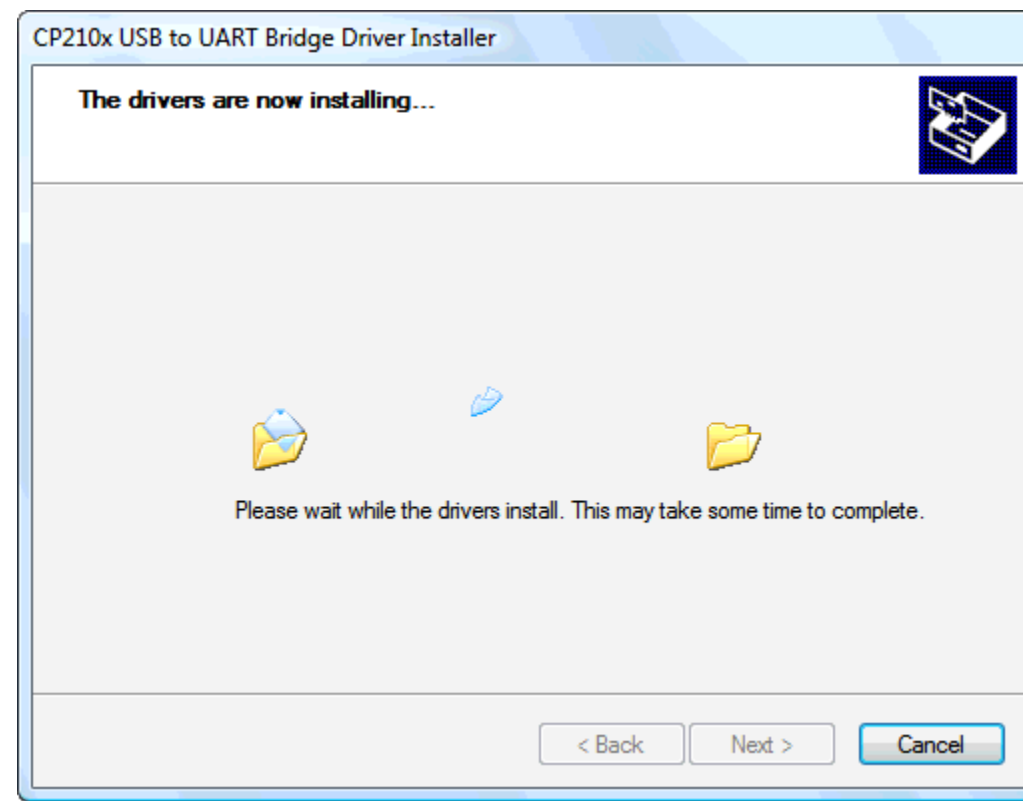
Click [Next>].

2. The following "License Agreement" window is displayed; please confirm its contents.



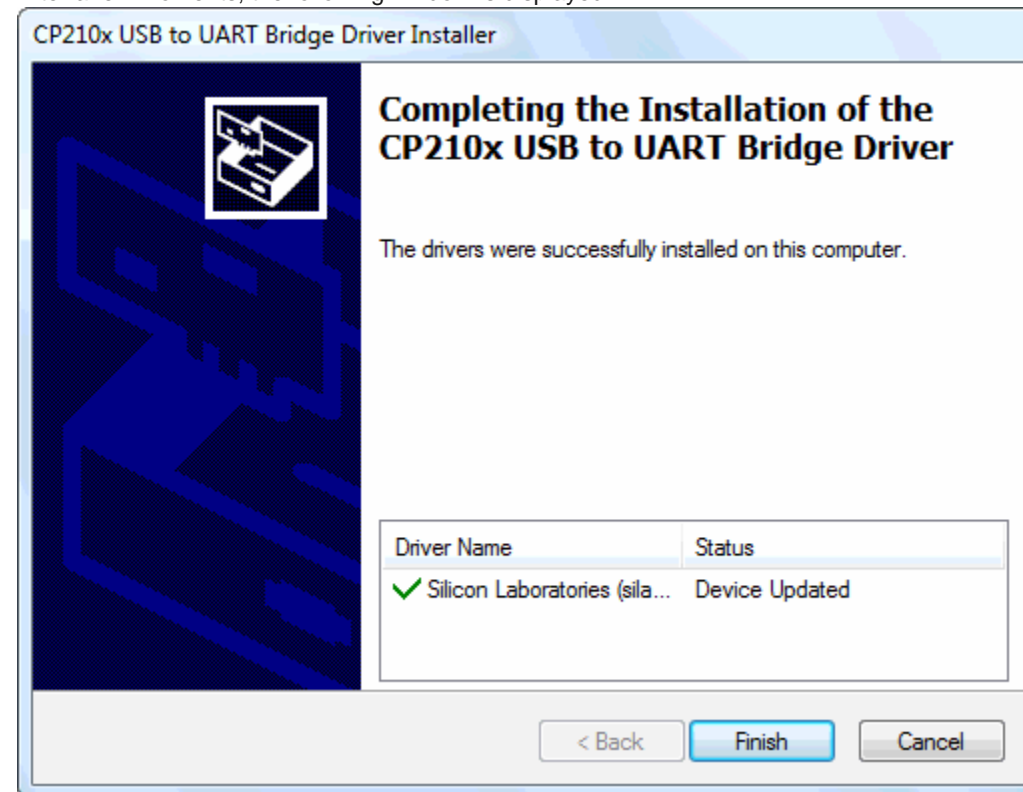
If you accept, check "I accept this agreement" and click [Next>].

3. The following window is displayed, and the driver installation will begin.



Wait until the installation is completed.

4. After a few moments, the following window is displayed.

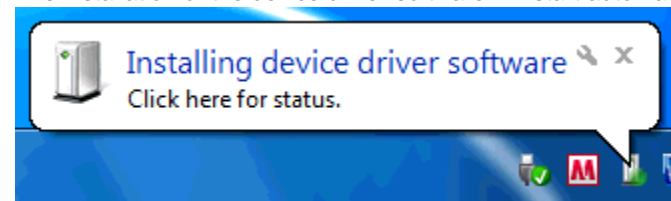


Click [Finish] to complete installation and exit.

● **Connecting the device to a PC**

Turn the transceiver power ON, then connect it to a PC via a connection cable for the transceiver. The PC will detect new hardware, and the following message is displayed.(The message may vary depending upon the operating system.)

The installation of the device driver software will start automatically.



If a reboot request appears, please reboot the PC.

● Confirming the COM port number

Open the "Device Manager" to confirm which COM port number is assigned for connection with the device.

(Confirm the COM port number after turning on the transceiver and connecting the transceiver to the PC using a USB cable or the KPG-22U/46U.)

For Windows Vista®

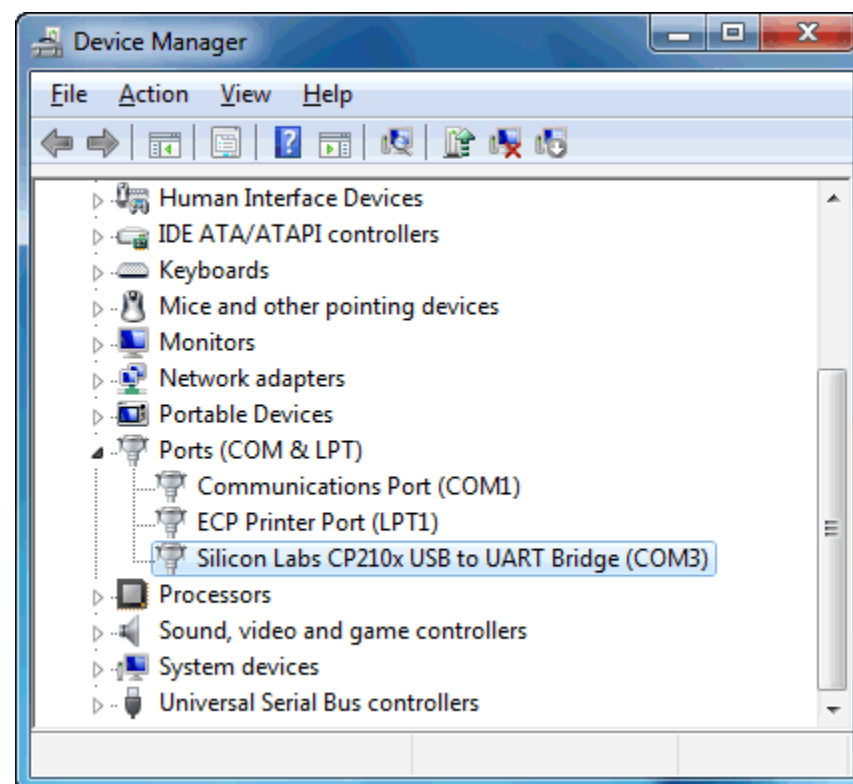
1. Click the Windows® [Start] button.
2. Click [Control Panel].
3. Click [Hardware and Sound], in the [Control Panel] window.
4. Click [Device Manager], in the [Hardware and Sound] window.
(In the User Account Control dialog box, a security message will appear. Click [Continue].)
5. [Device Manager] window will appear.

For Windows® 7

1. Click the Windows® [Start] button.
2. Right-click [Computer], then click [Properties].
3. Click [Device Manager] in the displayed window.
(If you don't log on to your PC as an "Administrator", a security message will appear. Click [OK].)
4. [Device Manager] window will appear.

For Windows® 8/8.1

1. Drag the mouse pointer to the upper-right corner and access the Charms bar.
2. Click [Settings] in the Charms bar, then click [Control Panel].
3. Click [System and Security], then click [Device Manager] in the displayed window.
4. [Device Manager] window will appear.



Click "Ports (COM & LPT)" to extend it, then you can find "Silicon Labs CP210x USB to UART Bridge (COMxx)". The "COMxx" number is different depending on your PC.

In the above example, "Silicon Labs CP210x USB to UART Bridge (COM3)" is listed. This means that COM3 is assigned for the connection with the transceiver.

Select this port number in the configurations for communication in the software you are using.

If you agree with the details listed above, click the following link to download the virtual COM port driver installation program.

["CP210x_VCP_Windows.zip"\(v6.7\) 3.66MB download](#)

You can also download the latest virtual COM port driver installation program from the [Silicon Laboratories website](#). (The URL link is subject to change.)

[For inquiries, please access](#)

▪ Windows Vista®, Windows®7, Windows®8, Windows®8.1, and Windows logo are registered trademarks of Microsoft Corporation in the United States and/or other countries.

Copyright 2011 JVCKENWOOD Corporation
